



## Flora Gardens Romford, RM6 4BG

Edward Chase are excited to present this excellent 3 bedroom house located within Chadwell Heath, RM6 to the residential lettings market. The property consists of a large through lounge, fitted kitchen, large garden with storage shed, three good sized bedrooms, family bathroom and additional W/C. The house is unfurnished so you can really stamp your mark on it and give it a homely feel. The property is ideal for all working professionals and families looking for a long term home which is on a quiet residential street but also within walking distance to all local amenities and transport links. The property key features; - 3 bedroom house - Through-lounge reception - Fitted kitchen with integrated white goods - Additional W/C - Storage shed - Family bathroom - Unfurnished - Gas central heating - Flooring on the ground floor - Large garden - Surrounded by great schools - Chadwell Heath Station within walking distance - Excellent transport links - Available end of May

- Three Good Sized Bedrooms, Two Of Which Are Fitted With Wardrobes Providing Ample Storage
- You Will Notice An Abundance Of Natural Light Within The House Giving It Light And Airy Feel
- The Property Will Be Newly Painted and In Good Decorative Order
- There Is A Large Through Lounge Which Leads On To The Garden, The Garden Is Large And Has Storage Shed
- The House Is Located On A Quiet Residential Street Which Is Close By To Local Amenities
- Modern Galley Kitchen With Integrated Appliances Including A Dishwasher

**Monthly Rental Of £1,599**

# Flora Gardens

## Romford, RM6 4BG

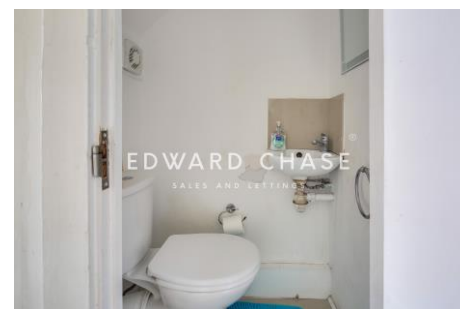
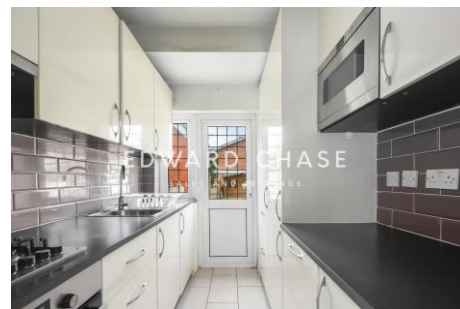
Monthly Rental Of £1,599

Edward Chase are excited to present this excellent 3 bedroom house located within Chadwell Heath, RM6 to the residential lettings market. The property consists of a large through lounge, fitted kitchen, large garden with storage shed, three good sized bedrooms, family bathroom and additional W/C. The house is unfurnished so you can really stamp your mark on it and give it a homely feel. The property is ideal for all working professionals and families looking for a long term home which is on a quiet residential street but also within walking distance to all local amenities and transport links. The property key features;

- 3 bedroom house
- Through-lounge reception
- Fitted kitchen with integrated white goods
- Additional W/C
- Storage shed
- Family bathroom
- Unfurnished
- Gas central heating
- Flooring on the ground floor
- Large garden
- Surrounded by great schools
- Chadwell Heath Station within walking distance
- Excellent transport links
- Available end of May

Please call Edward Chase Estate Agents to

attend the next available viewing. Lettings Edward Chase estate agents offer a bespoke, professional, ARLA accredited Lettings & Management service. If you would like a free property appraisal to gauge the rental potential of your property or you are considering a buy to let purchase, please feel free to contact Sukhbir Basra, Branch Manager to arrange an appointment. Edward Chase estate agents specialize in Ilford, Redbridge, Seven Kings, Goodmayes, Chadwell Heath, Newbury Park, Barkingside, Chadwell Heath, Barking, Canary Wharf, Romford, Dagenham, Newham, Royal Wharf and the surrounding East London vicinity.



Score	Energy rating	Current	Potential
92+	A		
81-91	B		
69-80	C		75   C
55-68	D		
39-54	E	54   E	
21-38	F		
1-20	G		

### MONEY LAUNDERING REGULATIONS 2003

Intending purchasers will be asked to produce identification and proof of financial status when an offer is received. We would ask for your co-operation in order that there will be no delay in agreeing the sale.